

# Motueka 50+ Walking Group. Aorere Goldfields Track.

This map details one walk near Rockville. The designated DOC Aorere Goldfields carpark is accessed via a rough farm track beyond the southern end of Devil's Boots Road.

**Goldfields Track** crosses a small paddock to a gate then follows an old 4WD track before turning into a single tack climbing modestly for a little over 2km. At 2.5km Ballroom Cave is a must see with easy access. Soon after the cave the track runs alongside an old water race until reaching Druggan's Dam. After that it rises a little more through stunted bush with views over Golden Bay in a loop before rejoining the track back to the cars. Occasionally uneven underfoot. Distance is about 9km with about 350m of ascent. Grade M2.

## KEY

Goldfields Track



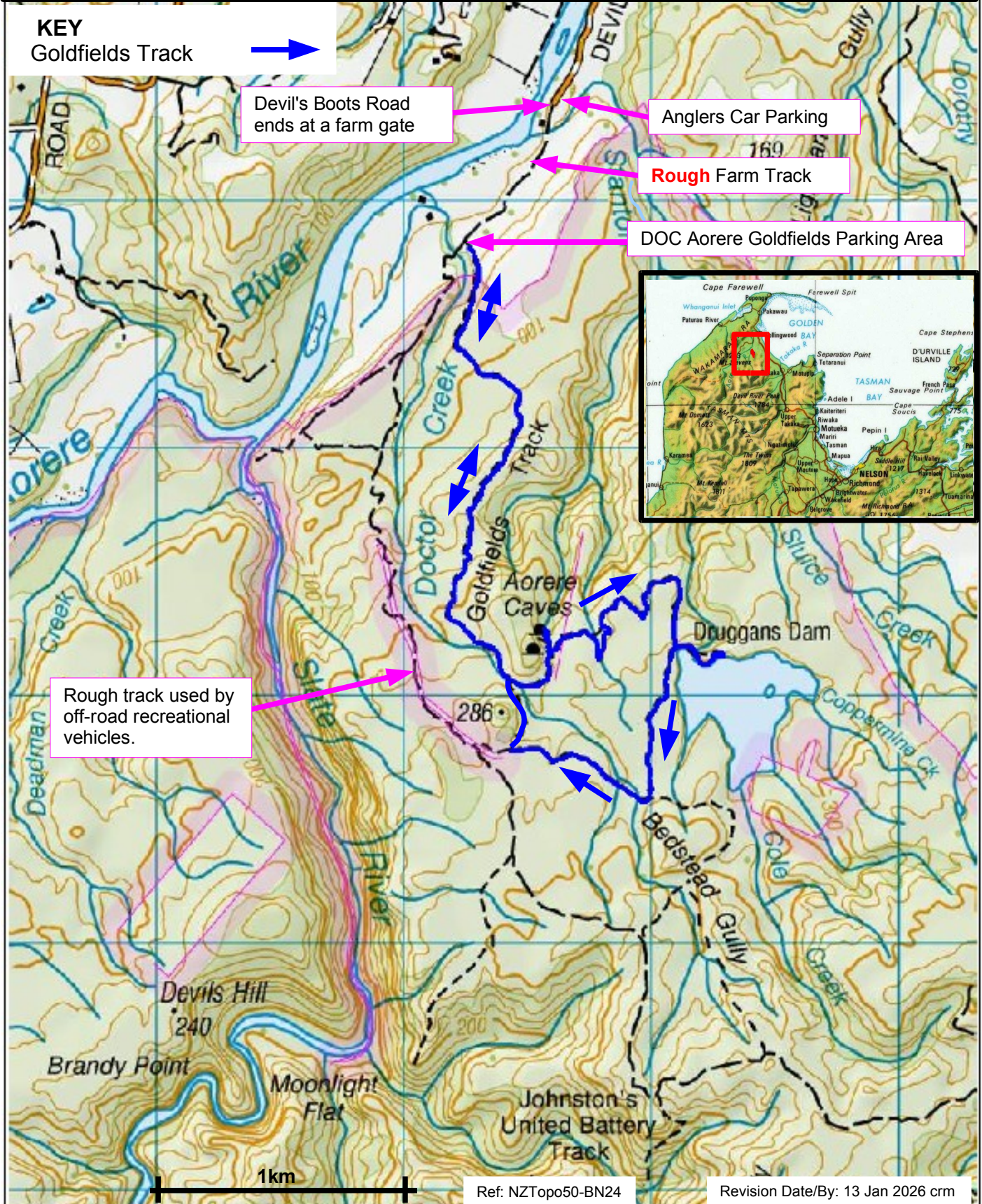
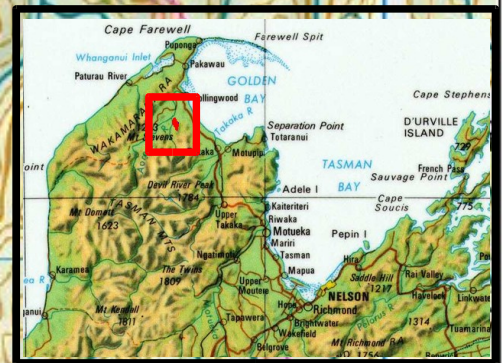
Devil's Boots Road ends at a farm gate

Anglers Car Parking

Rough Farm Track

DOC Aorere Goldfields Parking Area

Rough track used by off-road recreational vehicles.



1km

Ref: NZTopo50-BN24

Revision Date/By: 13 Jan 2026 crm