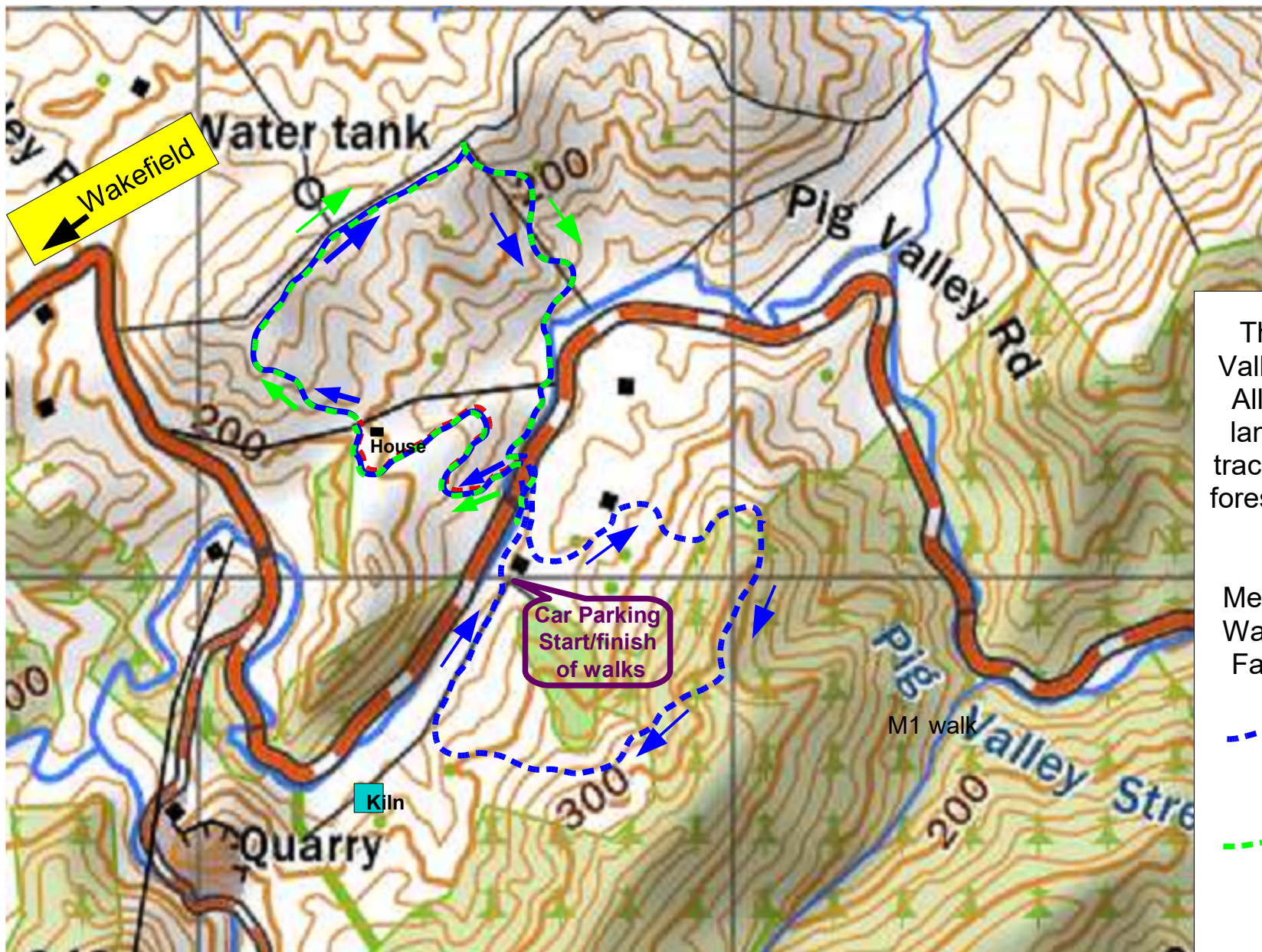




Motueka 50+ Walking Group Walks in Pig Valley Draft 2024



These walks are in the Pig Valley area beyond Wakefield. All walks are on private farm land, and are mostly on farm tracks, animal tracks and some forestry roads. Underfoot going is generally good.

Meet Rec Centre 8.45 am, or Wakefield Village Square (not Faulkners Bush) at 9.30 am.

 Walk 2, about 8 km
400 m Asc. Grade M1

 Walk 3, about 4 km
200 m Asc. Grade E3

